

TEND

BANDEX

BANDEX CABLE CLAMP AND CABLE CLIP

เคเบิลแคลมป์ และกิ๊บตอกสายไฟ

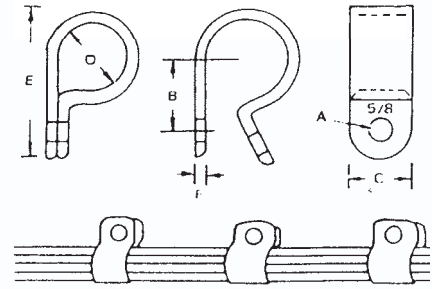
TAKAMURA

TEEFLEX

KENION

- MATERIAL : Nylon (Natural) Max. service temp. : 80°C
- CABLE CLAMP are designed to holed cables, tubes, and component in domestic appliance, electronics and electric apparatus generally.
- Interior edges are radiused to protect cable insulation.
- To apply, just clamp down on loosen cable and screw to chassis.
- Black color available

Item no.	A	B	C	D	E	F	Packing	Price/Pcs
CC-03	5.0	9.5	9.6	3.2 (1/8")	19.8	1.4	100 pcs	1.69.-
CC-05	4.6	10.5	9.6	4.8 (3/16")	19.8	1.4		1.85.-
CC-06	5.0	12.0	10.0	6.7(1/4")	22.0	1.4		1.85.-
CC-08	4.6	12.0	10.0	7.9(5/16")	22.0	1.5		1.85.-
CC-10	4.6	15.2	12.0	9.5 (3/8")	24.0	1.5		2.00.-
CC-13	4.6	12.5	12.0	12.7 (1/2")	31.0	1.5		2.31.-
CC-16	4.6	18.2	12.0	15.8 (5/8")	34.3	1.5		2.46.-
CC-19	4.6	18.2	12.0	19.4 (3/4")	35.0	1.5		2.92.-
CC-25	4.6	22.0	12.0	25.4 (1")	43.0	1.8		3.54.-
CC-32	4.6	26.2	12.0	31.8(1 1/4")	46.2	1.8		3.70.-
CC-38	4.6	30.0	12.0	36.7 (1 1/2")	50.0	1.8	4.31.-	



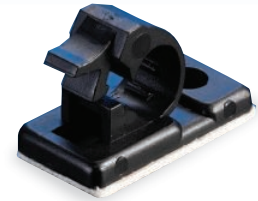
TAC

SELF-ADHESIVE CABLE CLAMP

MARLOW

HARU

- Material: Nylon (Black)
- Backed with a high quality pad. Designed to secure wire bundles where Fixing holes are impractical. Can be quickly applied to almost any clean, (Also provided with a mounting hole)



WIND

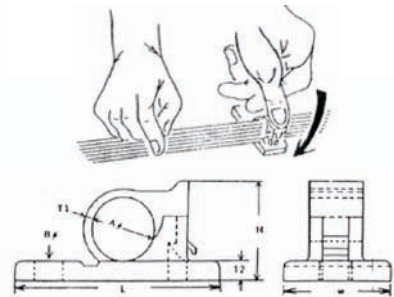
SPEED

COMMAX

ADVANTE

UNIVERSAL ADAPTER

Part no.	A∅	B∅	T1	T2	L	W	H	Packing	Price
4p-s	6	4.4	1.1	2	25.8	13.4	9.1	100 pcs	6.30.-
6p-s	9	4.4	1.1	3	29.4	13.4	14.0		6.65.-
8p-s	12	4.4	1.5	3	35.5	16.4	16.5		7.70.-
10p-s	14	4.4	1.5	3	36.5	16.4	18.5		7.70.-
11p-s	16	4.4	1.5	3	38.5	16.4	20.5		8.42.-
12p-s	18	4.4	1.5	3	42.0	16.4	22.5		9.15.-



ALION

CABLE CLIP

EXOWELD

CONTROL MAX

JKN

SYLVIA

WANG

Item no.	W (mm.)	Nail (mm.)	Standard packing	Price/Pcs
NK-4 (NC-0.4N)	4	2.5 x 18	100 pcs	1.05.-
NK-6 (NC-1N)	6	2.5 x 18		1.40.-
NK-8 (NC-2N)	8	2.5 x 22		1.55.-
NK-10 (NC-3N)	10	2.5 x 25		1.60.-
NK-12 (NC-4N)	12	2.5 x 27		1.68.-
NK-14 (NC-6N)	14	3.0 x 35		1.90.-
NK-16 (NC-7N)	16	3.2 x 38	50	2.95.-
NK-22 (NC-8N)	22	3.2 x 42		3.50.-
NK-25 (NC-9N)	25	3.2 x 47		3.85.-
NK-32 (NC-10N)	32	3.6 x 56		4.20.-



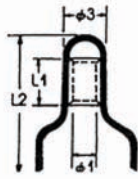
- Material : Impact Resistant PP (Gray)
- Applied for general round cables.
- NC Type Without Nails Been Deleted.
- All Clips Are NK Type Now With Nails
- Item No Were Changed Into Ie. NC-1 N Means With Nails. It Is Equal To NK-6.

MACCON

*ขอสงวนสิทธิ์ในการเปลี่ยนแปลงราคา

BANDEX CLOSE END WIRE CONNECTOR / VINYL WIRE END CAP

หัวหมวกต่อสายไฟ / ปลอกหุ้มหางปลา

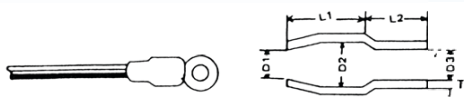


- The above size will be changed without notice if necessary.
- Material: UL approved NYLON 66,94v-2. Nylon insulated close-end wire connectors.
- To apply, insert pre-stripper wires into connector tube and crimp it with crimping tool to hold wires firmly even in vibration.

Cat. no.	ø1	ø2	ø3	L1	L2	Normal sectional area	A.W.G	Suitable wire	Packing	Price
								Straining mm ² d		
CE-1	2.4	7.8	5.1	7.5	20.0	1.25	22-16	0.5-1.75	100 pcs	1.55.-
CE-2	3.0	7.8	5.7	7.5	20.0	2.0	16-14	1.0-3.0		1.68.-
CE-5	3.8	10.5	7.3	8.5	25.3	5.5	12-10	2.5-6.0		3.00.-
CE-8	4.7	12.0	9.3	9.5	27.2	8.0	8.0	4.0-9.0		6.08.-

VINYL WIRE END CAP

- Material: Soft P.V.C
- Maximum service temp: 80°C
- For the insulation works of wire end terminal. Performing the work with a simple one-touch to tighten and seal against dirt, moisture and water.
- Standard color : Red, white, blue, yellow, black. (Green, brown available on special request)



ปลอกหุ้มหางปลาสีมาตรฐาน แดง (Red), ขาว (White), น้ำเงิน (Blue), เหลือง (Yellow), ดำ (Black), เขียว (Green)

Item no.	Wire suitable	D1	D2	D3	L1	L2	T	Packing	Price สัปดาห์
BVC-001	600V 1.25 mm ² , 12.5 mm ²	2.8	3.3	3.1	6	7	0.6	100 PCS	0.36.-
BVC-002	600V 2.0 mm ² , 2.0 mm ² , 1.2 mm ² , Single, 1.6 mm ² Single	3.3	4.5	3.7	7	7	0.7		0.36.-
BVC-003	600V 3.5 mm ²	4.8	5.7	4.1	9	8	0.8		0.42.-
BVC-005	600V 5.5 mm ² , 2.6 mm Single	4.8	5.7	5.2	9	8	0.8		0.48.-
BVC-008	600V 8.0 mm ² , 3.2 mm Single	6.2	7.2	6.2	10	9	1.0		0.60.-
BVC-014	600V 14 mm ²	8.0	10.0	8.0	13	11	1.1		0.96.-
BVC-022	600V 22 mm ²	9.5	12.0	9.5	15	14	1.2		1.56.-
BVC-038	600V 38 mm ²	11.8	14.0	11.8	17	16	1.5		1.92.-
BVC-060	600V 60 mm ²	13.5	16.8	13.5	20	19	1.5		3.00.-
BVC-080	600V 80 mm ²	16.0	19.0	16.0	25	21	1.6		3.96.-
BVC-100	600V 100 mm ²	18.0	22.0	18.0	30	24	1.7		5.40.-
BVC-125	600V 125 mm ²	20.0	24.0	20.0	32	25	1.8		6.00.-
BVC-150	600V 150 mm ²	22.0	24.4	22.0	34	31	1.81		7.80.-
BVC-200	600V 200 mm ²	28.0	32.0	24.0	35	30	2.0	20 PCS	9.60.-
BVC-250	600V 250 mm ²	32.0	36.0	25.0	40	35.5	2.0		12.00.-
BVC-325	600V 325 mm ²	34.3	38.0	28.5	40	36.5	2.01		14.40.-